

Connecting the Pole Display to the Computer



1. There will be one cable to install the pole display.
 - **Cable 1** is a USB connection. Connect **Cable 1** into an available USB port on your computer.

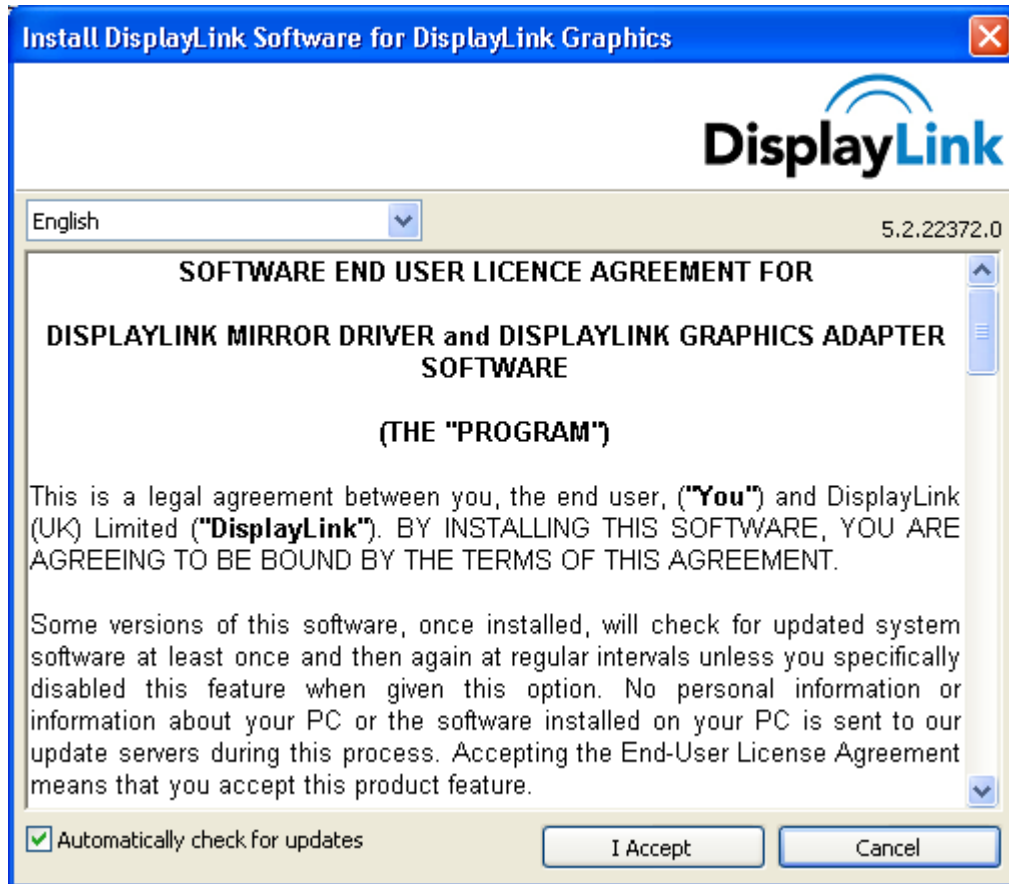
Note: The device is powered through the USB connection.

Installing the USB Driver

Make sure the device is unplugged for the driver installation.

The USB driver for the Virtual Pole Display can be downloaded from:

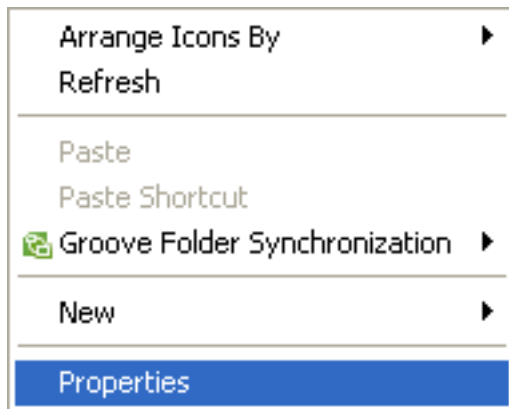
- <http://download2.pcamerica.com/drivers/Manufacturer/DisplayLink/DisplayLink-5.5.29194.zip>



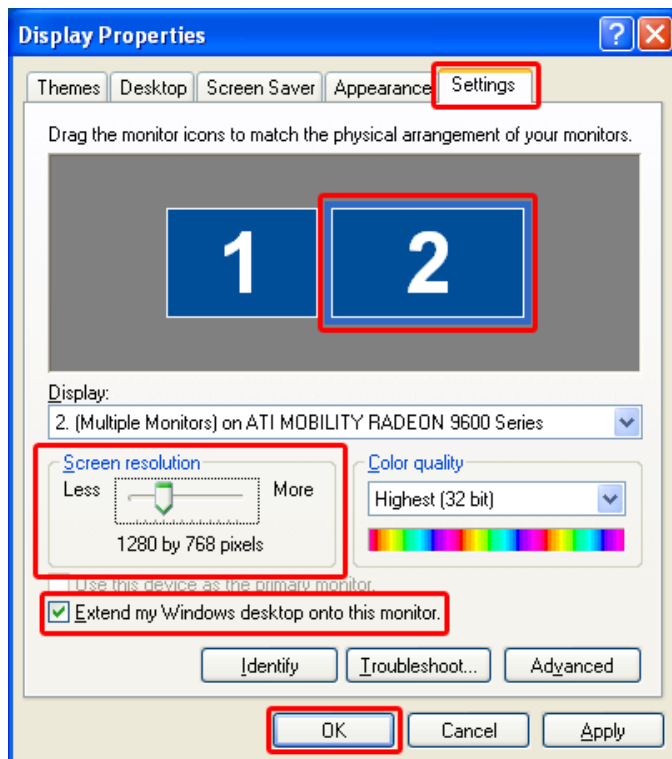
1. Select Your Language.
2. Select **I Accept**.

The USB driver will automatically be installed. You can now connect the Pole Display.

Enabling the Second Monitor in Windows XP



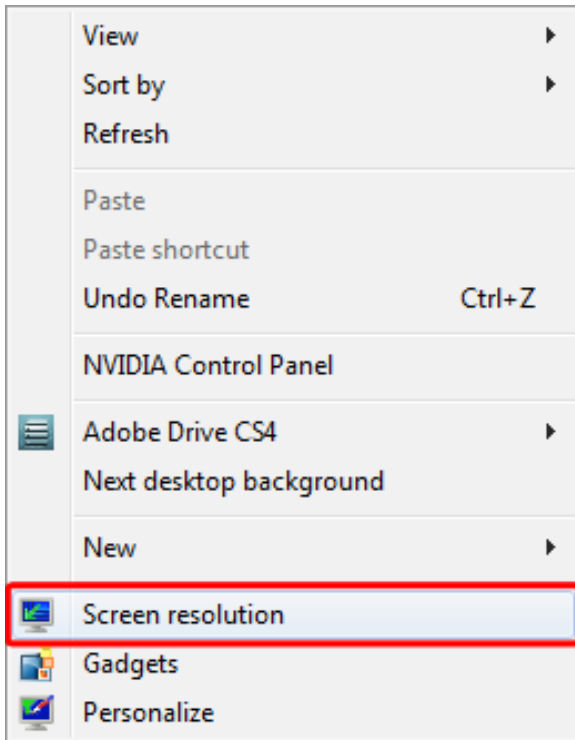
1. Right-click on the desktop and then select **Properties**.



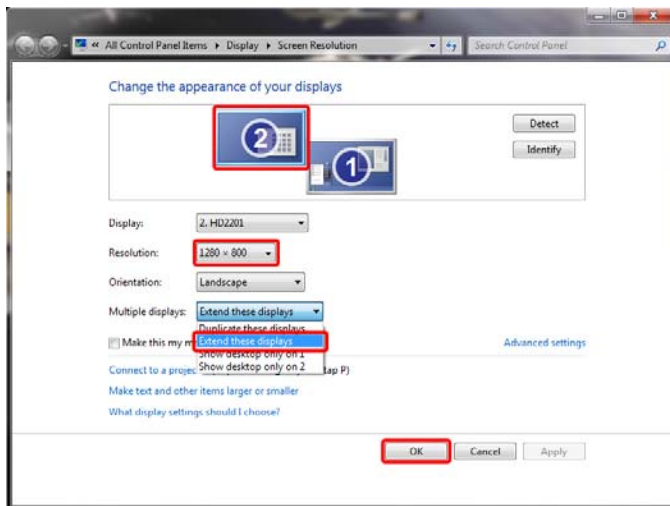
2. Select the **Settings** tab.
3. Select the monitor that you would like to extend the display to, and then check to **Extend my Windows desktop onto this monitor**.
4. Set the monitors screen resolution under **Screen resolution**.
5. When done select **OK**.

Note: If the resolution can only be set to 800x400 then you must use the one of the specific color themes (Black-800, Blue-800, Red-800) in the virtual pole configuration section below.

Enabling the Second Monitor in Windows Vista/7



1. Right-click on the desktop and then select **Screen Resolution**.



2. Select the monitor that you would like to extend the display to, and then use the dropdown to select **Extend these displays** under **Multiple displays**.
3. Set the monitors screen resolution, under **Resolution**.
4. When done select **OK**.

Note: If the resolution can only be set to 800x400 then you must use the one of the specific color themes (Black-800, Blue-800, Red-800) in the virtual pole configuration section below.

Enabling the Virtual Pole Display in CRE/RPE

Manager

Options

1. Select the **Manager** or **Options** button.
2. Enter the administrator password (default: admin) where applicable.
3. Select **Setup** then, **Setup Screen**.

Setup Screen

Account Control Company Info Couponing **Hardware** Internet Features Inventory Invoice Settings

Payment Processing Quick Invoicing & Alerts Quick-Add Receipt Reports

Restaurant Features Station Specifics System Access Touch Screen

Page 1 Page 2 Page 3

Pole Display Port

None
 COM1
 COM2
 COM3
 COM4
 COM5
 USB
 Other

Pole Display Type

General
 Casio \ Touch Dynamic
 Virtual(Classic)
 Posiflex
 Toshiba
 OPOS
 Virtual(New)

OPOS Pole Display
PoleDisplay Port
NONE

PinPad Port

None
 COM1
 COM2
 COM3
 COM4
 COM5
 COM6
 Other

PinPad Type
None

PinPad Connection
Serial

PinPad IP Address

PinPad IP Port
0

Weight Scale - Primary

None
 COM1
 COM2
 COM3
 COM4
 COM5
 COM6
 Other

Primary Scale Type
CAS PD-1 or PD-2

Weight Scale - Secondary

None
 COM1
 COM2
 COM3
 COM4
 COM5
 COM6
 Other

Secondary Scale Type
CAS PD-1

Cash Drawer

Cash Drawer
 Open Default Drawer
 Open Employee Drawer

Default Cash Drawer Port
NONE



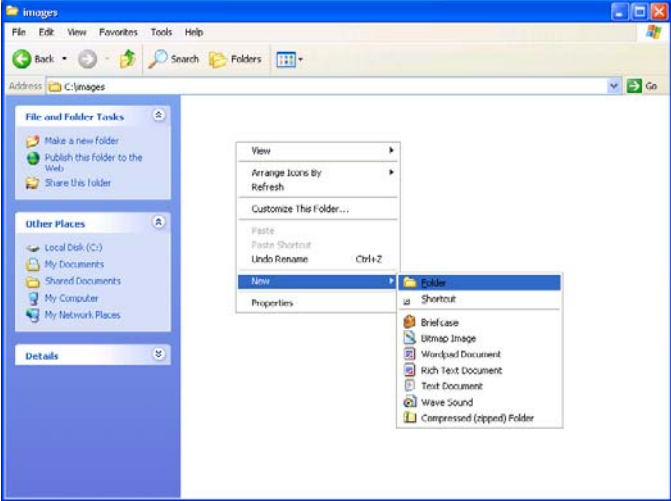
Check drawer open status (Epson only)

Scale **Update** **Exit**

4. Select the **Hardware** tab and then the Page 1 tab.
5. Under **Pole Display Type** select **Virtual(New)**.
6. Select **Update**.

Creating the Common Images Folder

We will need to create a common images folder where all the images that are used will be copied to.

	<ol style="list-style-type: none">1. Select Start.
	<ol style="list-style-type: none">2. Select My Computer.
	<ol style="list-style-type: none">3. Navigate to where you would like the folder created.4. Right-click a blank area and then go to New and then Folder.5. Give the folder a name.

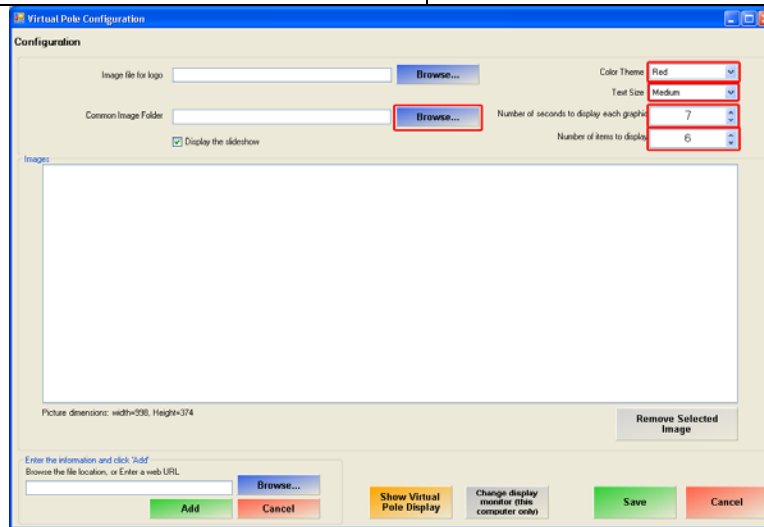
At this point of the installation we will need to restart the computer that the virtual pole display is attached to. Make sure to leave the pole display attached during the restart.

Configuring the Pole Display

Manager

Options

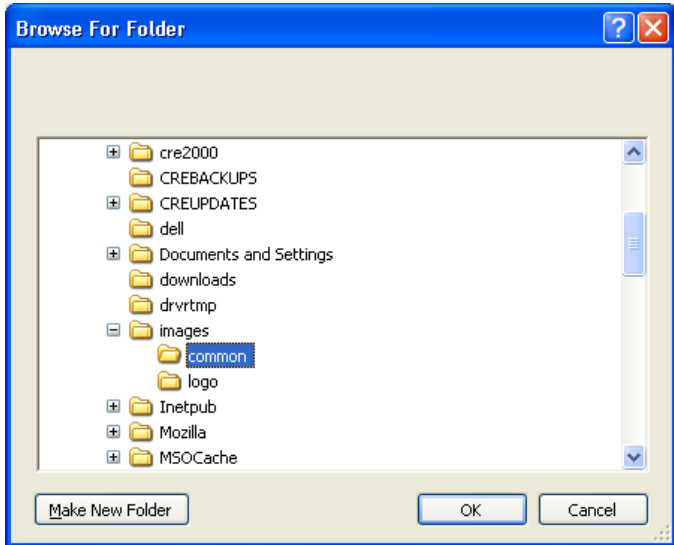
1. Select the **Manager** or **Options** button.
2. Enter the administrator password (default: admin) where applicable.
3. Select **Setup** then, **Virtual Pole Configuration**.



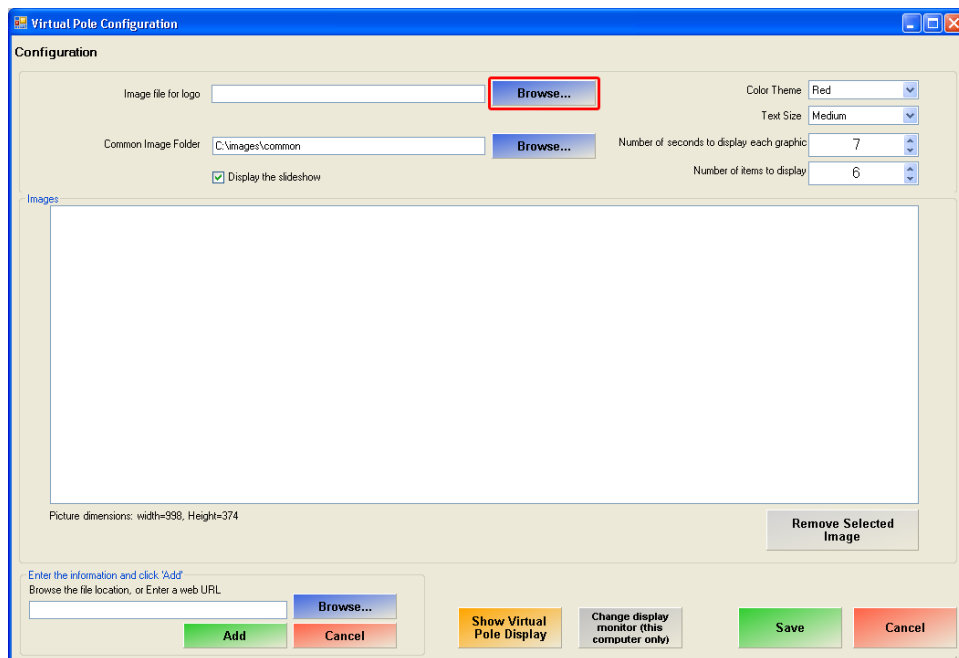
4. Select the **Color Theme***.

Note: If the screen resolution can only be set to 800x400 then you must use the one of the specific color themes (Black-800, Blue-800, Red-800). If these options are not available please upgrade to the latest version of CRE/RPE.

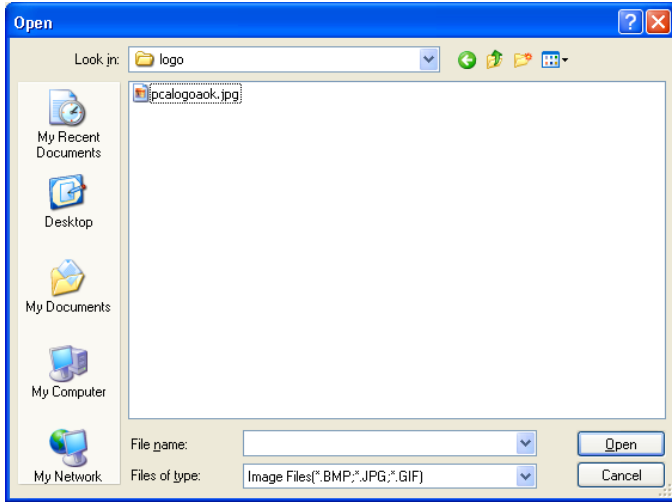
5. Select the **Text Size***.
6. Set the **Number of seconds to display each graphic**.
7. Set the **Number of items to display**.
8. For the **Common Image Folder** select the folder we created earlier by selecting **Browse....**
(*see below for sample logic controls screens)



9. Select the folder that you would like all of the images copied to.
10. When done select **OK**.



11. For **Image file for logo** select **Browse...**

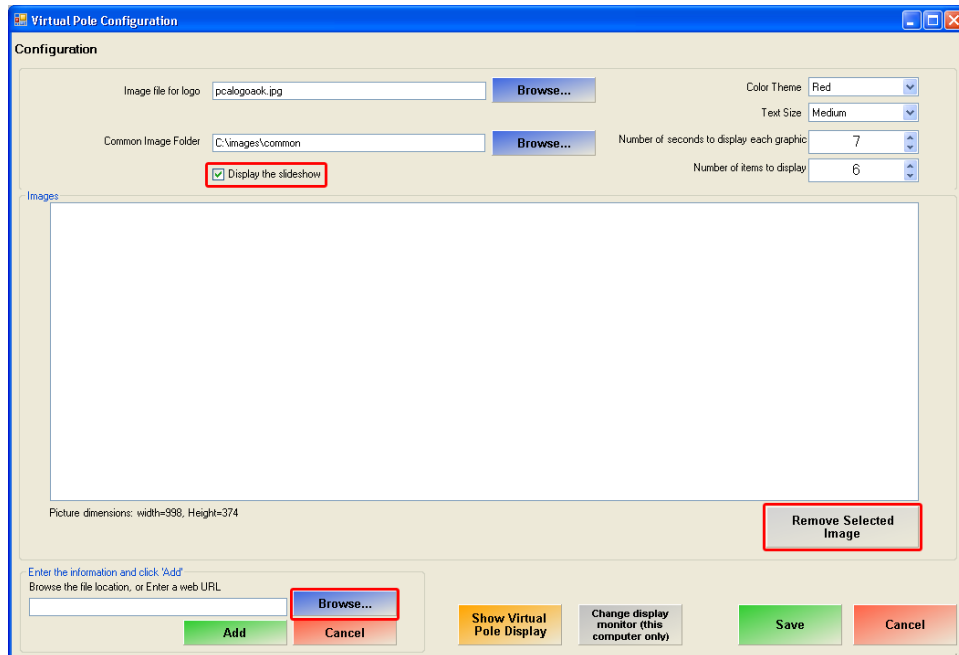


12. Select the file you would like to use as a logo and select **Open**.

Depending on the resolution that was setup, will determine the size of the logo that can be used.

It is recommended for any resolution to have an aspect ratio of 1:3. For example 100px (H) X 300px (W).

On lower resolution screens it is recommended to use smaller images.



13. Select **Browse...** at the bottom right and select the images you would like to display at the bottom of the display.

Any Images selected will automatically be resized to fit underneath the items.

It is recommended to use images with the aspect ratio of 1:3. For example 100px (H) X 300px (W).

14. Optionally you can choose to **Display the slideshow**.

15. If there is an image you don't want on the slideshow select it and then select **Remove Selected Image**.

16. When done select **Show Virtual Pole Display**.

17. If you have multiple monitors select **Change display monitor (this computer only)**, this will cycle through each monitor until the correct one is displaying the display.

18. When done select **Save**.

Sample Pole Display Screens



A sample pole display screen for pcAmerica. The screen features a blue header with the pcAmerica logo and tagline 'Retail and Restaurant Solutions'. Below the header is a table with three columns: quantity, description, and price. The table lists two items: Soda and Chips. Below the table is a summary section with Subtotal, Tax, and Total. At the bottom of the screen is a large pcAmerica logo and tagline.

quantity		description	price
1	1 pc/\$1.250	Soda	\$1.25
1	1 pc/\$0.500	Chips	\$0.50
Subtotal:			\$1.75
Tax:			\$0.18
Total:			\$1.93

pcAmerica
Retail and Restaurant Solutions

- Blue Theme
- Large Text
- 2 Items Being Displayed
- Logo
- Advertisement Image




A sample pole display screen for pcAmerica. The screen features a blue header with the pcAmerica logo and tagline 'Retail and Restaurant Solutions'. Below the header is a table with three columns: quantity, description, and price. The table lists eight items: Pepperoni Pizza, Regular Size, Regular Crust, and five Sodas. Below the table is a summary section with Subtotal, Tax, and Total. At the bottom of the screen is a large pcAmerica logo and tagline.

quantity		description	price
1	1 pc/\$12.000	Pepperoni Pizza	\$12.00
1	1 pc/\$0.000	Regular Size	\$0.00
1	1 pc/\$0.000	Regular Crust	\$0.00
1	1 pc/\$1.250	Soda	\$1.25
1	1 pc/\$1.250	Soda	\$1.25
1	1 pc/\$1.250	Soda	\$1.25
1	1 pc/\$1.250	Soda	\$1.25
1	1 pc/\$1.250	Soda	\$1.25
Subtotal:			\$18.25
Tax:			\$1.83
Total:			\$20.08

pcAmerica
Retail and Restaurant Solutions

- Blue Theme
- 8 Items Being Displayed
- Large Text
- Logo

quantity		description	price
1	1 pc/\$1.250	Soda	\$1.25
1	1 pc/\$0.500	Chips	\$0.50
Subtotal:			\$1.75
Tax:			\$0.18
Total:			\$1.93



- Red Theme
- 2 Items Being Displayed
- Small Text
- Advertisement



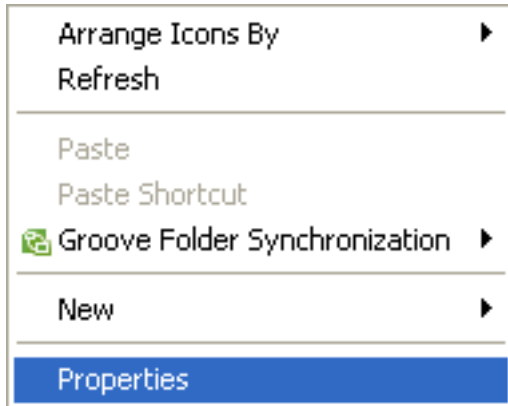
quantity		description	price
1	1 pc/\$1.250	Soda	\$1.25
1	1 pc/\$0.500	Chips	\$0.50
Subtotal:			\$1.75
Tax:			\$0.18
Total:			\$1.93

- Black Theme
- Logo
- 8 Items Being Displayed
- Large Text

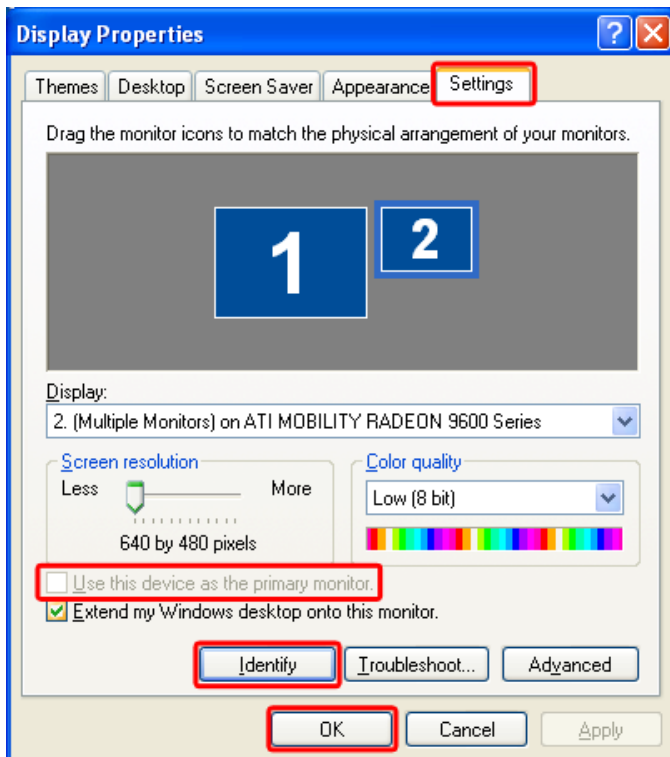
Troubleshooting the Virtual Pole Display

If after plugging in the virtual pole display, CRE/RPE is being displayed on another screen then please see the directions below:

Troubleshooting the Virtual Pole Display in Windows XP



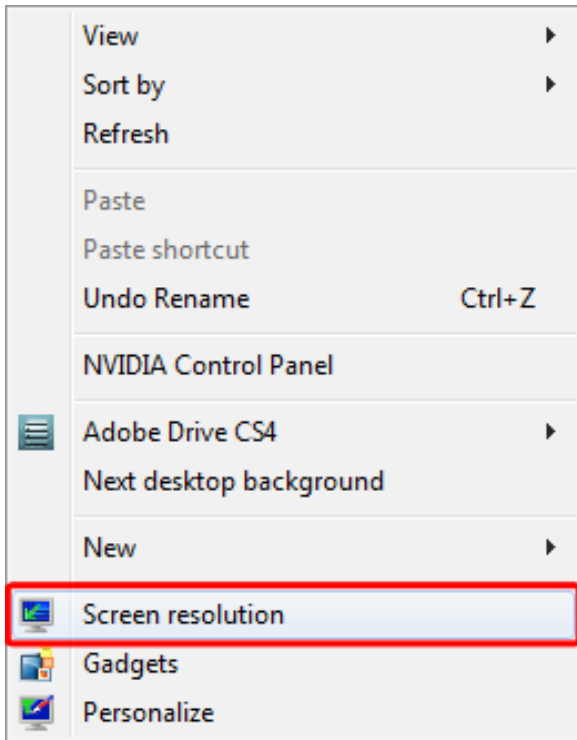
1. Right-click on the desktop and then select **Properties**.



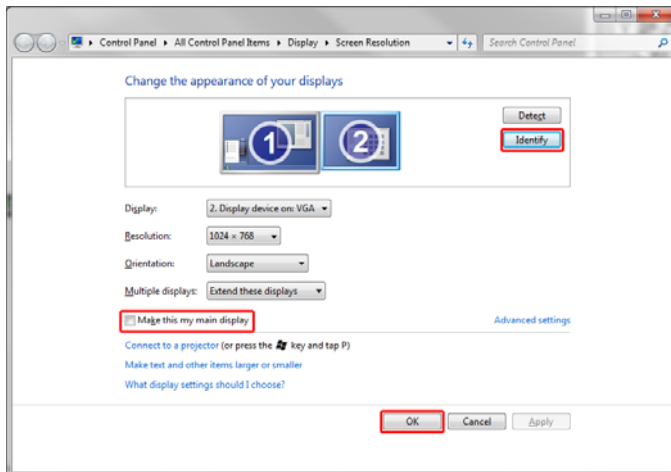
2. Select the **Settings** tab.
3. Select **Identify**. The monitors will have a large number displayed on them, this will help you determine which one you would like to make the primary*.
4. After determining which monitor you would like to set as the primary*, select **Use this device as the primary monitor**.
5. When done select **OK**.

* The Primary Monitor is the one that displays the invoice screen in CRE/RPE.

Troubleshooting the Virtual Pole Display in Windows Vista/7



1. Right-click on the desktop and then select **Screen Resolution**.



2. Select **Identify**. The monitors will have a large number displayed on them, this will help you determine which one you would like to make the main display*.
3. After determining which monitor you would like to set as the main display*, select **Make this my main display**.
4. When done select **OK**.

* **The Main Display is the one that displays the invoice screen in CRE/RPE.**